

Department of Industry Tourism and Trade

# Rum Jungle Rehabilitation

Jackie Hartnett Project Executive Director



# Introduction

- The Rum Jungle project is a legacy mine rehabilitation program of work aimed at addressing historic environmental and cultural impacts to this area.



# Project History and Context

The Warai and Kungarakan peoples are the Traditional Owners of the area.

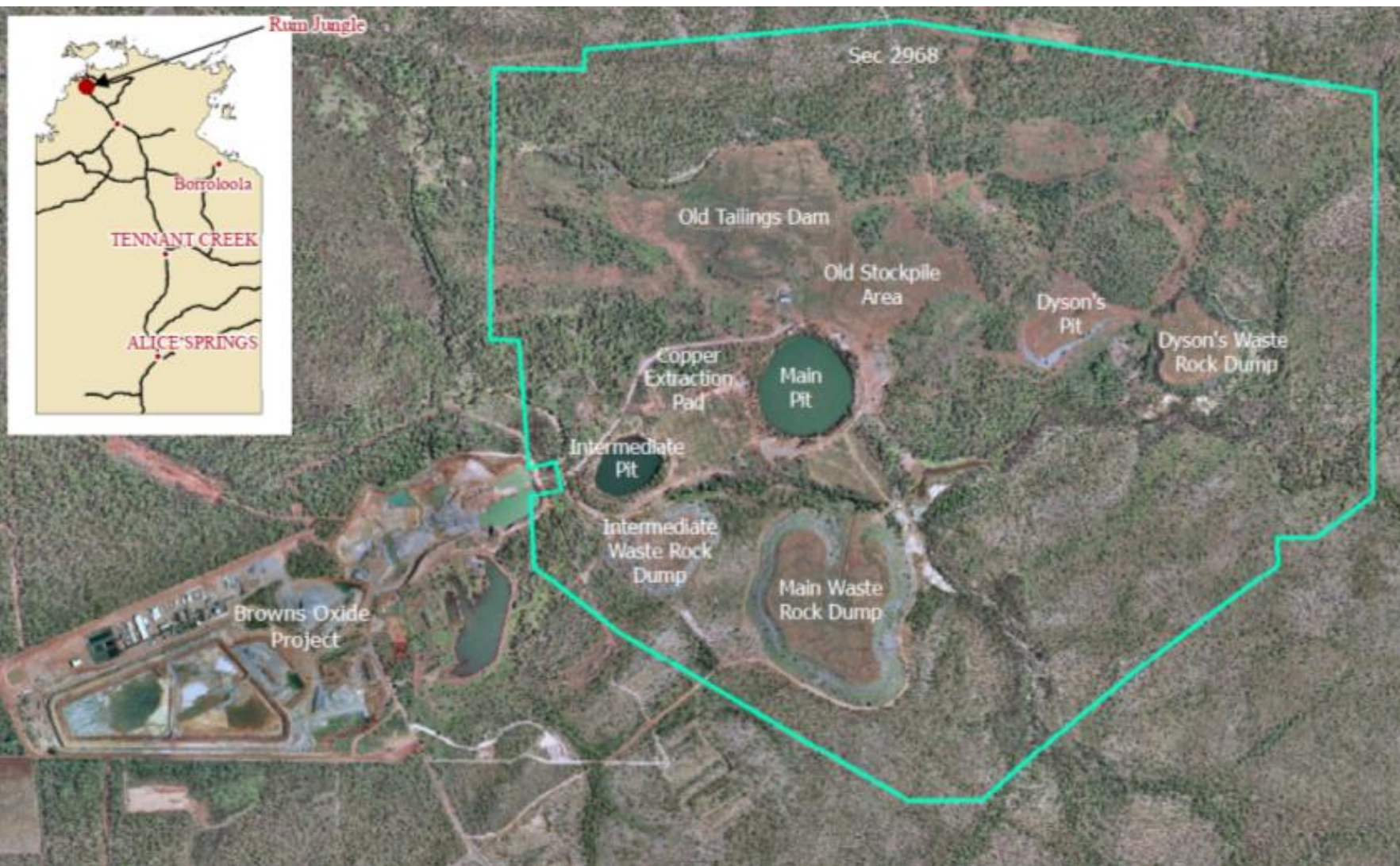
The property contains several key Sacred Sites that are vitally important to the Custodians.

Land is currently NT Crown land and is the outstanding portion of the Finniss River Land Claim.

DITT working with Commonwealth DISER since 2009 under a National Partnership Arrangement to develop design for the rehabilitation project.



# Site History



- Mined from the 50s to 70s
- Mined prior to *Aboriginal Land Rights Act* and *Sacred Sites Act*
- Early rehabilitation efforts funded by Cth, delivered by NT in 1980s
- One of the world's first mined land rehabilitation works
- Reduced metals load to river by approx. 70%



3km

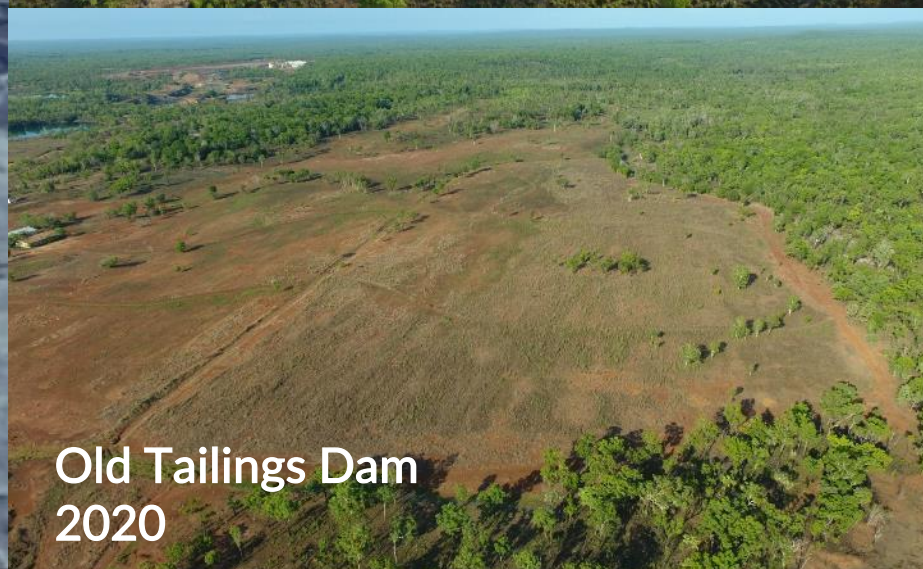
# Site Context



Prior to 1980s work,  
uranium tailings on  
surface



Dysons Waste Rock  
Dump 2020



Old Tailings Dam  
2020



Dysons backfilled pit  
2020



Intermediate Pit and East Finniss  
Diversion Channel 2020

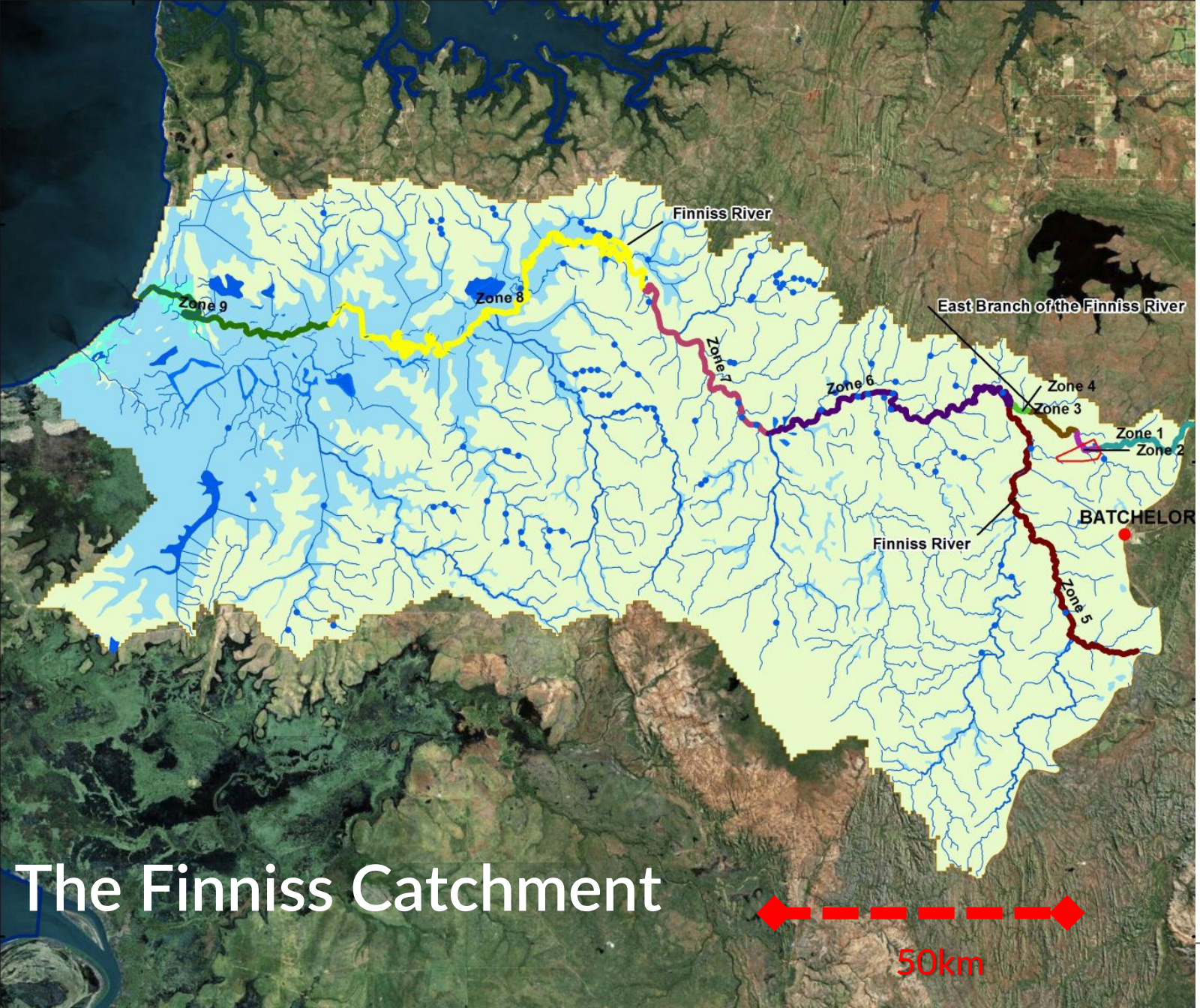
10 Mm<sup>3</sup> of waste rock and material onsite

# Rehabilitation 2.0



# Impacts to the Environment

- 2.5 t per year Copper
- 2000 t per year Sulphate
- Currently less than 1% species protection in the EBFR
- Low rates of aquatic diversity
- Locally Derived Water Quality Objectives developed for site



The Finnisss Catchment

# Impacts to the Environment



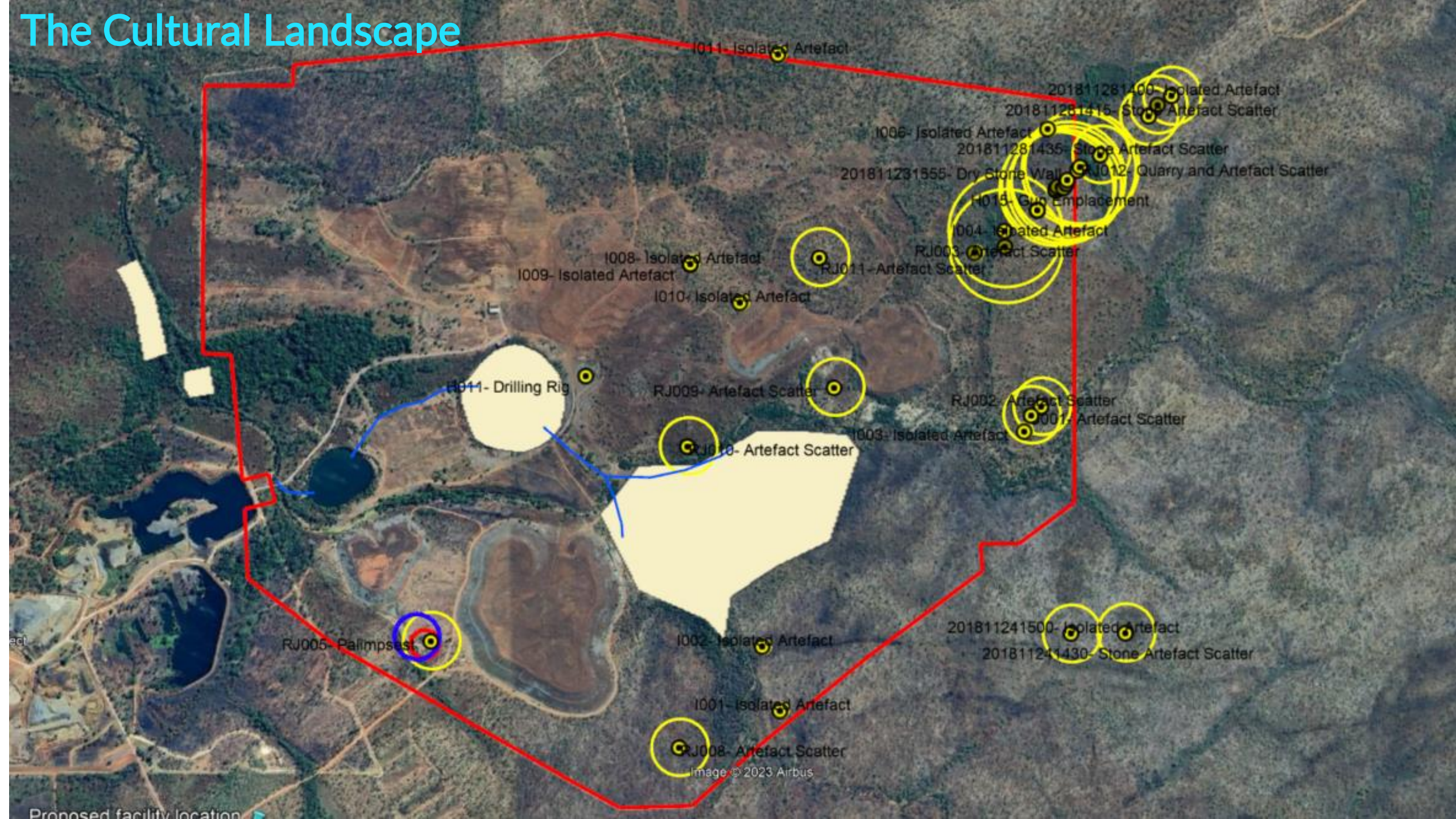
EBFR diversion channel alongside the Intermediate WRD

Salts in groundwater drawn up by capillary action





# The Cultural Landscape



I011- Isolated Artefact

201811281400- Isolated Artefact

201811281415- Stone Artefact Scatter

I006- Isolated Artefact

201811281435- Stone Artefact Scatter

201811231555- Dry Stone Wall

I012- Quarry and Artefact Scatter

H015- Gun Emplacement

I004- Isolated Artefact

RJ003- Artefact Scatter

I008- Isolated Artefact

I009- Isolated Artefact

RJ011- Artefact Scatter

I010- Isolated Artefact

H011- Drilling Rig

RJ009- Artefact Scatter

RJ002- Artefact Scatter

I001- Artefact Scatter

I003- Isolated Artefact

RJ010- Artefact Scatter

RJ005- Palimpsest

I002- Isolated Artefact

201811241500- Isolated Artefact

201811241430- Stone Artefact Scatter

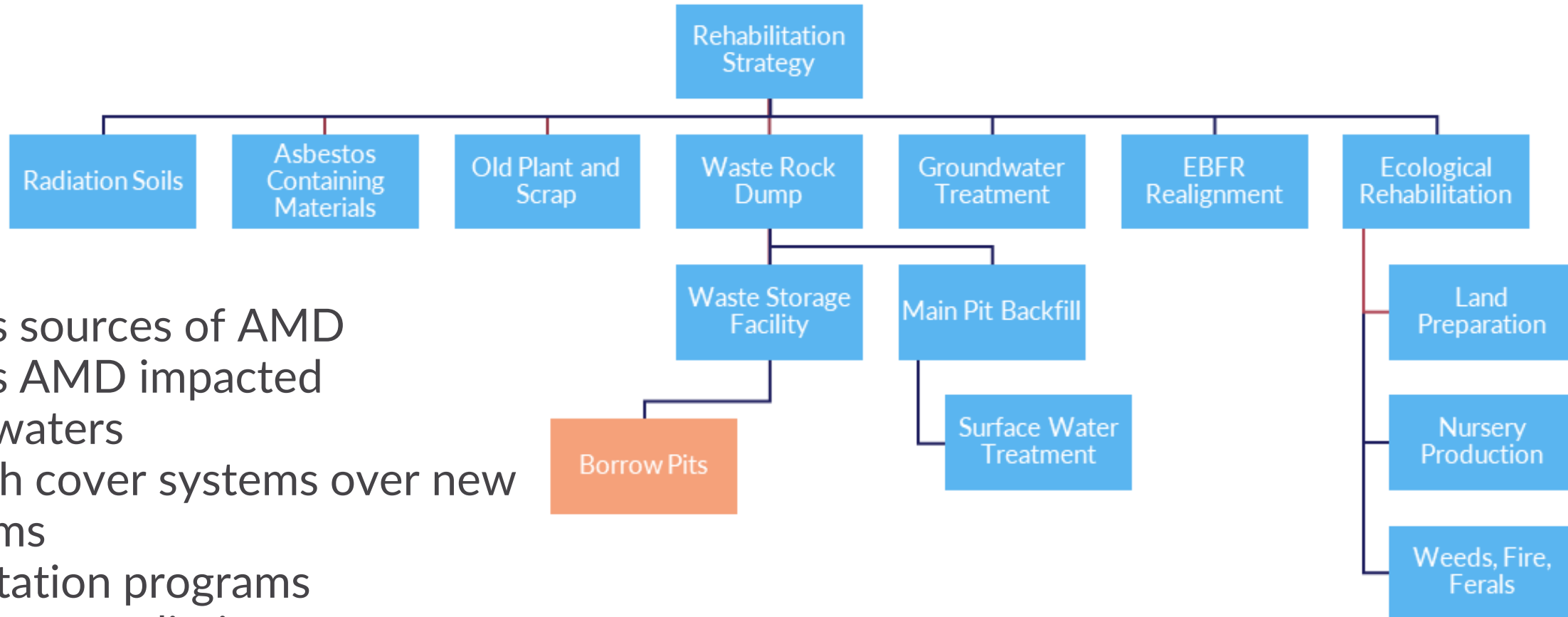
I001- Isolated Artefact

RJ008- Artefact Scatter

Image © 2023 Airbus

Proposed facility location

# Remediation Strategy

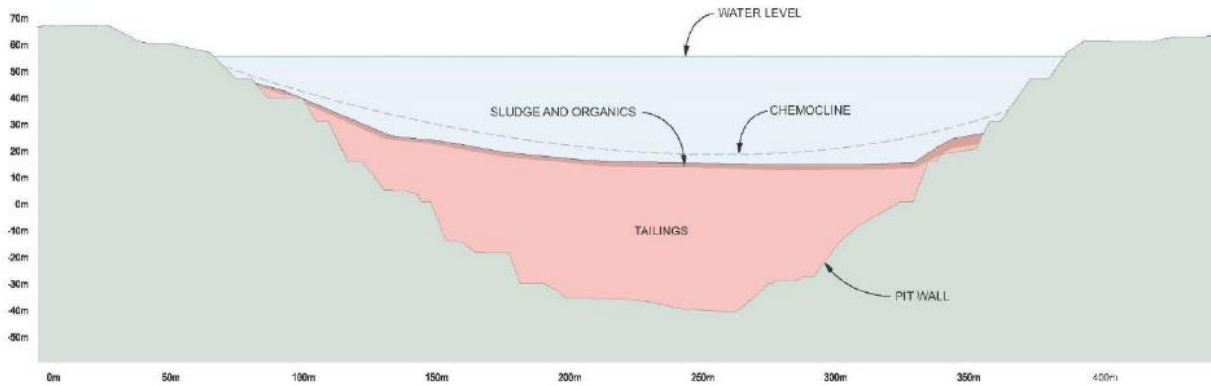


- Address sources of AMD
- Address AMD impacted groundwaters
- Establish cover systems over new landforms
- Revegetation programs
- Asbestos remediation
- Return River to its original course

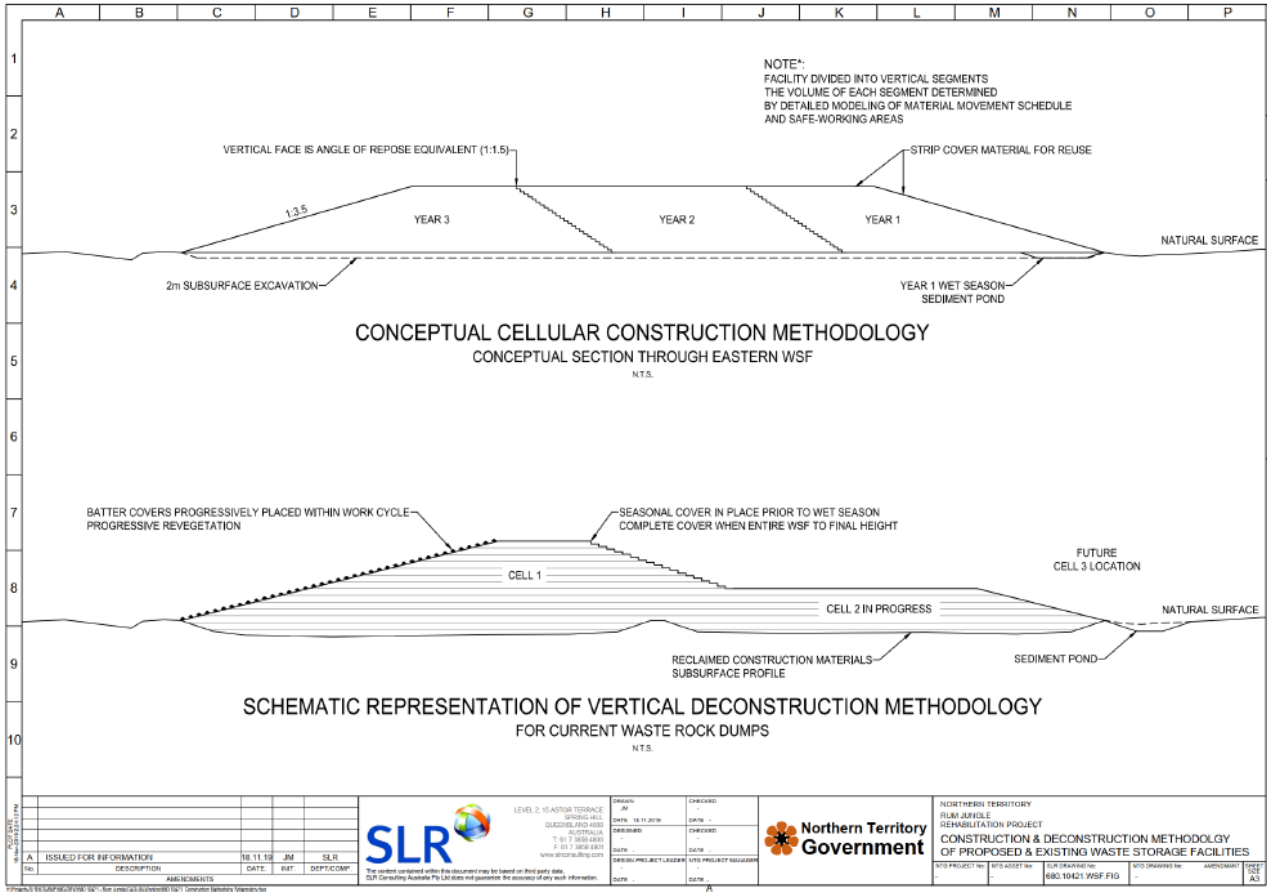
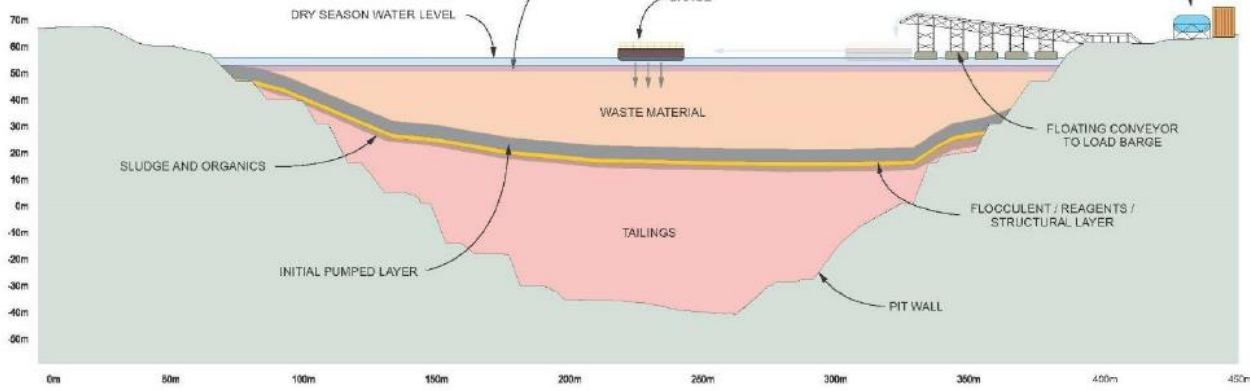
# Remediation Strategy

- Backfilling of the Main Pit
- Realigning the EBFR

EXISTING CONDITIONS



TREATMENT / CONFIGURATION



- New Waste Storage Facilities
- Seepage Interception System to address groundwater contamination

# Projected Outcomes

Reduction of Copper reporting to the EBFR from 2.5 t/year to 0.24 t/year

Reduction of Sulphate reporting to the EBFR from 2000 t/year to 938 t/year

This represents an increase from less than 1% species protection to 70%



# HOW you do the job is just as important as WHAT the job is

- Healing country healing people, connection, spirit, power
- Direct Participation Pathways – jobs and business
- Direct Cultural Advisory

